



Nationally Significant Infrastructure Projects (NSIPs) NEWSLETTER

Issue 6, March 2025

Introduction

What is an NSIP?

An NSIP is a Nationally Significant Infrastructure Project. They are a certain type of project, over a certain size, and considered by the Government to be so big and nationally important that permission to build them needs to be given at a national level, by the responsible Secretary of State. The thresholds for NSIPs are set out in sections 15 to 30A of the Planning Act 2008. Instead of applying to the local authority for planning permission, the developer must apply to the Planning Inspectorate (PINS) for a different kind of permission called a Development Consent Order (DCO). The PA2008 process was introduced to streamline the decision-making process for major infrastructure projects. Since then, over 110 NSIPs have been consented in the UK. PINS is responsible for undertaking DCO examinations and writing a report with recommendations to the Secretary of State to aid their decision-making.

Parish and town councils are key stakeholders and consultees in the NSIP process. Suffolk has to deal with a very large number of NSIPs, particularly related to energy developments, so raising awareness of the current status of all of Suffolk's NSIPs with parish and town councils is important to allow for their fullest engagement in the process of NSIPs affecting their area.

Suffolk County Council's (SCC's) Scrutiny Committee discussed on 30 June 2023 the impact of NSIPs on Suffolk's communities and how the Council works with communities to encourage consultation responses that are reflective of the views of local people. The CEO of SALC, Sally Longmate, highlighted the pressures and issues parish councils face in relation to NSIPs. The documents related to that meeting are available on the SCC website, and a recording of the meeting is available on YouTube.



1 - Video of Scrutiny Committee 30th June 2023

SCC Scrutiny Committee documents:

[https://committeeminutes.suffolk.gov.uk/DocSetPage.aspx?MeetingTitle=\(30-06-2023\),%20Scrutiny%20Committee](https://committeeminutes.suffolk.gov.uk/DocSetPage.aspx?MeetingTitle=(30-06-2023),%20Scrutiny%20Committee)

Recommendation f) from the Scrutiny Committee states that parish councils should be updated about the status of Suffolk's current and potential NSIPs. This newsletter will be provided every couple of months, prepared by SCC officers, and circulated through SALC.

Guidance for Town and Parish Councils



Getting to Grips with NSIPs

Advice for Town and Parish Councils on Nationally Significant Infrastructure Projects (NSIPs)

The Suffolk Association of Local Councils (SALC) and Suffolk County Council (SCC) have produced a guidance document on how town and parish councils can engage more effectively with the NSIP process. The guidance includes explanations of key documents, stages, and procedures within the NSIP process. In drafting the guidance, SALC's experience in the governance and procedures of town and parish councils has been complemented by SCC's significant knowledge and expertise in the NSIP process to inform potential roles that town and parish councils can play in NSIPs.

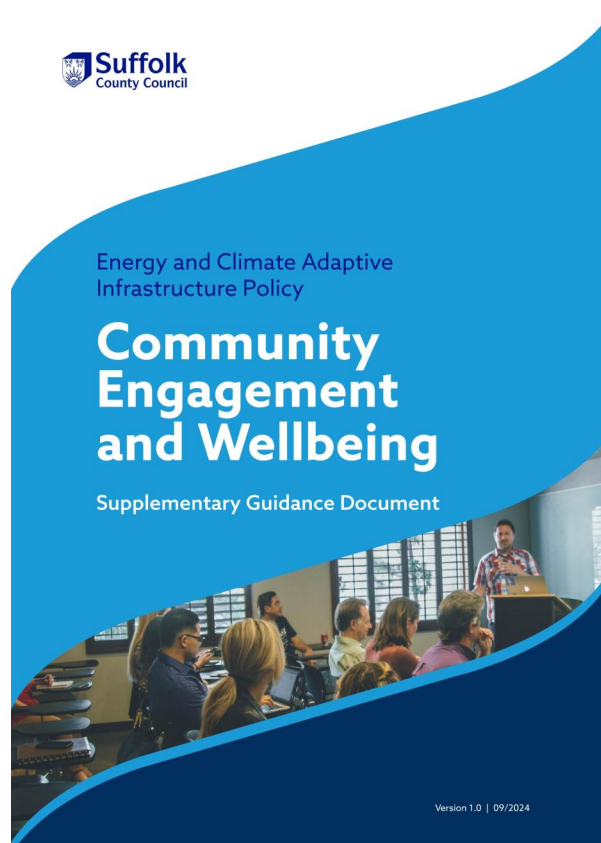
The guidance document can be found at the following link:

<https://www.suffolk.gov.uk/asset-library/getting-to-grips-with-nsips.pdf>

Link to the Suffolk Association of Local Council's dedicated page for local councils on NSIPs:

<https://www.salc.org.uk/national-strategic-infrastructure-projects-nsips>

SCC Guidance for NSIP Developers: Community Engagement and Wellbeing



This guidance document was written by Suffolk County Council, for NSIP Developers to take account of.

How the document came to be:

Following a public question to the meeting of the County Council on 21 March 2024 regarding the wellbeing of communities and the mental health impacts of nationally significant infrastructure consenting from the chairman of Friston Parish Council Mr Michael Mahoney, officers have been working with Cllr Richard Rout, Cabinet Member for Devolution, Local Government Reform and NSIPs, to consider how to address this very important issue. The Council's Head of Public Mental Health has engaged further with Friston Parish Council and worked with the Council's NSIPs team to explore solutions. Officers sought advice from leading UK experts on health impact assessments and community engagement to inform the discussion.

What the document aims to do:

As responsibilities for community engagement lie with developers, the Council's greatest lever is to influence developers. Hence, the Council has developed guidance for project promoters about community engagement and safeguarding the wellbeing of communities, which was published in September 2024. This guidance appears to be first of its kind in the United Kingdom, and its publication has been shared widely with Government officials, the Planning Inspectorate, and local authorities across England.

<https://www.suffolk.gov.uk/asset-library/community-engagement-and-wellbeing-policy.pdf>

Suffolk County Council has published other guidance on NSIPs. The most recent guidance documents are aimed at developers/ promoters of NSIP schemes. These can be found on Suffolk County Council's website here: [NSIP information for developers and project promoters - Suffolk County Council](#)

Regional Energy Planning - proposals by the energy regulator, Ofgem

Suffolk County Council has responded to a consultation from the regulator Ofgem, about the proposed system of Regional Energy system planning. The proposed new system has the potential to manage the development of energy infrastructure much better and allow greater local accountability and much better management of change.

The Consultation can be found at: <https://www.ofgem.gov.uk/consultation/regional-energy-strategic-plan-policy-framework-consultation>

And the response from Suffolk County Council can be found here:

<https://www.suffolk.gov.uk/asset-library/Suffolk-County-Council-RESP-Consultation-Response-081024-FINAL-redacted.pdf>

Local authority roles in the NSIP process

During the NSIP process, the role of the county and district council is that of a statutory consultee who can try to persuade/advise, but local authorities cannot force changes upon the developer, as they are not the decision-makers. Neither the county nor the district council are responsible for designing or delivering any scheme. However, they are important stakeholders who can often shape the design and mitigation of projects.

Parish and town councils hosting, or being adjacent to, proposed NSIPs are also statutory consultees. It is important for these councils to provide the local community perspective in the process, aiming to influence design, mitigation, and community benefit proposals.

NSIP Project Updates

(Projects in Alphabetical order)

Glossary

- BESS = Battery Energy Storage System
- DCO = Development Consent Order
- DoR = Discharge of Requirement
- EIA = Environmental Impact Assessment
- NGET = National Grid Electricity Transmission
- NGV = National Grid Ventures
- NSIP = Nationally Significant Infrastructure Project
- PINS = Planning Inspectorate
- SALC = Suffolk Association of Local Councils
- SCC = Suffolk County Council

Bramford to Twinstead

Location: Babergh

This project proposal by National Grid Electricity Transmission (NGET) is to construct a new 400 kV power line between Bramford and Twinstead to reinforce the electricity transmission network.

(No update this issue)

Update from Issue 4 (October 2024):

The Secretary of State granted Development Consent on 12 September. Officers were pleased that the DCO requires submission of detailed construction management plans instead of just relying upon the high-level outline versions submitted with the application. National Grid have announced Balfour Beatty as their main contractors and discussions are expected to commence shortly in respect of the construction.

More information:

- Link to Bramford to Twinstead's National Grid webpage:
<https://www.nationalgrid.com/electricity-transmission/network-and-infrastructure/bramford-twinstead>
- Link to the Suffolk County Council webpage on Bramford to Twinstead:
<https://www.suffolk.gov.uk/planning-waste-and-environment/major-infrastructure-projects-including-nsips/nationally-significant-infrastructure-projects-nsips/bramford-to-twinstead>
- Link to the PINS webpage where all public documents relating to Bramford to Twinstead can be found: <https://national-infrastructure-consenting.planninginspectorate.gov.uk/projects/EN020002>

East Anglia ONE North and TWO Offshore Wind Farms (Scottish Power Renewables (SPR))

Location: East Suffolk

East Anglia ONE North and TWO are proposals to create connections to a new substation at Friston via High Voltage Alternating Current undersea and underground cables.

(No update this issue)

Update from Issue 4 (October 2024):

It is noted that East Anglia TWO has been successful in the government's recent Contract for Difference auction round. For more information on this:

<https://www.gov.uk/government/news/tidalwave-of-clean-energy-investment-worth-billions-unlocked-ahead-of-investment-summit>

SCC is continuing to deal with Discharge of Requirements (DoRs) with colleagues at East Suffolk Council.

More information:

- Link to East Anglia ONE North's webpage:
https://www.scottishpowerrenewables.com/pages/east_anglia_one_north.aspx
- Link to East Anglia TWO's webpage:
https://www.scottishpowerrenewables.com/pages/east_anglia_two.aspx
- Link to the Suffolk County Council webpage on East Anglia ONE North:
<https://www.suffolk.gov.uk/planning-waste-and-environment/major-infrastructure-projects-including-nsips/nationally-significant-infrastructure-projects-nsips/east-anglia-one-north>
- Link to the Suffolk County Council webpage on East Anglia TWO:
<https://www.suffolk.gov.uk/planning-waste-and-environment/major-infrastructure-projects-including-nsips/nationally-significant-infrastructure-projects-nsips/east-anglia-two>
- Link to the PINS webpage where all public documents relating to East Anglia ONE North can be found here: <https://national-infrastructure-consenting.planninginspectorate.gov.uk/projects/EN010077>
- Link to the PINS webpage where all public documents relating to East Anglia TWO can be found here: <https://national-infrastructure-consenting.planninginspectorate.gov.uk/projects/EN010078>

East Pye Solar

Location: South Norfolk

The East Pye Solar proposals include the construction, operation, maintenance, and decommissioning of ground-mounted solar PV arrays and associated development, including a Battery Energy Storage System (BESS), in the area of Long Stratton, South Norfolk

Update March 2025:

The Planning Inspectorate held a consultation between 15 January and 12 February 2025 in respect of East Pye Solar Ltd's East Pye Solar Environmental Impact Assessment (EIA) Scoping Report. As neighbouring authorities, Suffolk County Council and Mid Suffolk District Council provided a joint response to the scoping consultation, considering technical matters of the EIA and not the principle of the development itself. The Council raised concerns about the promoter's proposal to scope socio-economic impacts out of the EIA, the cumulative impacts of several NSIPs being delivered adjacent to the A140 concurrently, and the need for more detail regarding proposed routing of abnormal indivisible loads. These comments were used to inform the Planning Inspectorate's Scoping Opinion, which was published in February 2025 and can be found here - [EN0110014-000012-EN0110014 - East Pye Solar Scoping Opinion FINAL.pdf](#).

More information:

- Link to East Pye Solar's webpage: <https://www.eastpyesolar.co.uk/>
- Link to the PINS webpage where all public documents relating to East Pye Solar can be found: <https://national-infrastructure-consenting.planninginspectorate.gov.uk/projects/EN0110014>

EcoPower Suffolk

Location: Mid Suffolk

An energy farm with solar PV and a co-located Battery Energy Storage System (BESS) and associated infrastructure which also includes a grid connection to the Yaxley National Grid substation.

Update (March 2025):

The proposed development site is approximately 600 hectares (ha) in size, predominantly across five solar array areas, situated near the Yaxley substation (on separate land parcels to the southwest of Stuston, northeast of Eye, north of Gissingham, north of Occold, and southwest of Thrandeston), together with cable route corridors (connecting the solar array areas to the Yaxley substation).

The non-statutory consultation takes place between the 10 March to 22 April 2025.

It is anticipated that the application for development consent will be made between April and June 2026. This is an unprecedented speed for a project of this type in Suffolk. Therefore it is important that parish and town councils take this first opportunity to engage with the project, seeking to amend and improve it. This is without prejudice to any objections they

may have, either in principle or in detail, to the scheme. It is important to recognise the status of town and parish councils in the consenting of NSIPs. Relevant parish and town councils are statutory consultees in the Nationally Significant Infrastructure Planning (NSIP) process.

Suffolk County Council has set out its initial concerns in a press release which can be viewed at: [Council fears pace of decision for large solar farm in north Suffolk - Suffolk County Council](#)

Cllr Richard Rout has also written to the relevant town and parish councils, highlighting the guidance and support that is available to them, and setting out the pace that the scheme is intending to progress, and the implications of this. <https://www.suffolk.gov.uk/asset-library/scc-letter-to-parishes-ecopower-march-2025-redacted.pdf>

More information:

- Link to EcoPower Suffolk's website: <https://ecopowersuffolk.com>
- Link to the PINS webpage where all public documents relating to EcoPower Suffolk can be found: <https://national-infrastructure-consenting.planninginspectorate.gov.uk/projects/EN0110019>

Five Estuaries Offshore Wind Farm

Location: Off East Suffolk coast / Essex

A wind farm, proposed off the East Suffolk coast, with the landing point and onshore infrastructure proposed to be in Essex.

Update (March 2025):

The Examination into the Five Estuaries Offshore Wind Farm, which began on 18 September 2024, will conclude on 17 March 2025. Officers from Suffolk County Council have attended hearings and participated in the written process throughout the Examination, raising issues relating to landscape impact, traffic and transport, and skills and employment. Over the next three months, the Examining Authority will prepare their Recommendation to the Secretary of State regarding whether the project should be granted development consent, before the Secretary has three months to make a decision.

More information:

- Link to Five Estuaries' website: <https://fiveestuaries.co.uk>

- Link to Suffolk County Council's webpage on Five Estuaries:
<https://www.suffolk.gov.uk/planning-waste-and-environment/major-infrastructure-projects-including-nsips/nationally-significant-infrastructure-projects-nsips/five-estuaries-offshore-windfarm>
- Link to the PINS webpage where all public documents relating to Five Estuaries can be found: <https://national-infrastructure-consenting.planninginspectorate.gov.uk/projects/EN010115>

LionLink

Location: East Suffolk

LionLink is the proposal by National Grid Ventures (NGV) for a subsea electricity link between Suffolk and the Netherlands, which will also connect with Dutch windfarms.

Update (March 2025):

On 19 February 2025, NGV announced Walberswick as its preferred landfall site for the LionLink project, a proposed multi-purpose interconnector between the UK and the Netherlands. As a result, the landfall site option north of Southwold has been discounted. SCC set out its concerns about the impact of this decision, and the lack of coordination with other projects, in a press release: <https://www.suffolk.gov.uk/council-and-democracy/council-news/suffolk-communities-to-suffer-from-lack-of-energy-project-coordination>.

NGV has also organised two community drop-in sessions, on 14 and 15 March, and a webinar on 19 March 2025 (details of which can be found here - <https://www.nationalgrid.com/document/153551/download>), ahead of the statutory consultation planned for Autumn 2025. If granted development consent, NGV is now planning to have the project operational in 2032.

More information:

- Link to LionLink's National Grid website page:
<https://www.nationalgrid.com/national-grid-ventures/lionlink/about>
- Link to Suffolk County Council's webpage on LionLink:
<https://www.suffolk.gov.uk/planning-waste-and-environment/major-infrastructure-projects-including-nsips/nationally-significant-infrastructure-projects-nsips/lionlink>
- Link to SCC's response to the non-statutory consultation:
<https://www.suffolk.gov.uk/asset-library/eurolink-non-statutory-consultation-scc-response1.pdf>

- Link to SCC's response to the supplementary non-statutory consultation:
<https://www.suffolk.gov.uk/asset-library/LionLink-Supplementary-Non-Statutory-Consultation-SCC-response.pdf>
- Link to the PINS webpage where all public documents relating to LionLink can be found: <https://national-infrastructure-consenting.planninginspectorate.gov.uk/projects/EN020033>

Nautilus

Location: East Suffolk

Nautilus is a National Grid Ventures proposal to create a Multi-Purpose Interconnector with Belgium.

(No update this issue)

Update from the last issue (January 2025):

On 12 November 2024, the energy regulator, Ofgem, announced that it had decided that the Nautilus Interconnector between the UK and Belgium would connect at the Isle of Grain in Kent, and not in Suffolk, as the regulator had proposed in the summer of 2024. Suffolk County Council welcomes news that the Nautilus Interconnector project will not be coming to Suffolk.

More information:

- Link to Nautilus's National Grid website page:
<https://www.nationalgrid.com/national-grid-ventures/interconnectors-connecting-cleaner-future/nautilus-interconnector>
- Link to the Suffolk County Council webpage on Nautilus:
<https://www.suffolk.gov.uk/planning-waste-and-environment/major-infrastructure-projects-including-nsips/nationally-significant-infrastructure-projects-nsips/nautilus>
- Link to the PINS webpage where all public documents relating to Nautilus can be found: <https://national-infrastructure-consenting.planninginspectorate.gov.uk/projects/EN020023>

North Falls Offshore Wind Farm

Location: Off East Suffolk coast / Essex

A wind farm, proposed off the East Suffolk coast, with the landing point and onshore infrastructure proposed to be in Essex.

Update (March 2025):

The Examination into the North Falls Offshore Wind Farm began on 29 January 2025 and is expected to conclude in July 2025. Officers from Suffolk County Council have been attending hearings and participating in the written process, raising issues relating to landscape impact, traffic and transport, and skills and employment.

More information:

- North Falls Website: <https://www.northfallsoffshore.com>
- Link to the Suffolk County Council webpage on North Falls: <https://www.suffolk.gov.uk/planning-waste-and-environment/major-infrastructure-projects-including-nsips/nationally-significant-infrastructure-projects-nsips/north-falls-offshore-windfarm-scottish-and-southern-electricityrwe>
- Link to the PINS webpage where all public documents relating to North Falls can be found: <https://national-infrastructure-consenting.planninginspectorate.gov.uk/projects/EN010119>

Norwich to Tilbury

Location: Babergh and Mid Suffolk

This project proposal by National Grid Electricity Transmission (NGET) is to construct a new 400 kV electricity transmission line between Norwich and Tilbury.

(No update this issue)

Update from the last issue (January 2025):

NGET have entered a period of targeted consultations, with the first of this series including locations in Norfolk and Suffolk. This 30-day targeted consultation began on 30 January 2025 and closed on 3 March 2025. For Suffolk, this includes six locations where potential changes could be made to the proposals as published in the Statutory Consultation which ended in July 2024.

The DCO application is expected to be submitted in 2025.

Prior to the targeted consultation, SCC was disappointed to learn that NGET has decided to install overhead lines through the Waveney Valley, rather than running cables underground, as they had set out in their previous consultation. The Council's views on this matter are detailed in this press release: <https://www.suffolk.gov.uk/council-and-democracy/council-news/unique-landscape-to-be-changed-forever-by-pylons>

More information:

- Link to Norwich to Tilbury's National Grid webpage: <https://www.nationalgrid.com/electricity-transmission/network-and-infrastructure/infrastructure-projects/norwich-to-tilbury>
- Link to the Suffolk County Council webpage on Norwich to Tilbury: <https://www.suffolk.gov.uk/planning-waste-and-environment/major-infrastructure-projects-including-nsips/nationally-significant-infrastructure-projects-nsips/norwich-to-tilbury>
- Link to Suffolk County Council's response to the Norwich to Tilbury non-statutory consultation: <https://www.suffolk.gov.uk/asset-library/imported/scc-response-to-eag-informal-consultation-16-june.pdf>
- Link to Suffolk County Council's response to the Norwich to Tilbury supplementary non-statutory consultation: <https://www.suffolk.gov.uk/asset-library/scc-response-to-norwich-to-tilbury-non-stat-con-2.pdf>
- Link to Suffolk County Council's response to the Norwich to Tilbury statutory consultation: <https://www.suffolk.gov.uk/asset-library/scc-response-to-norwich-to-tilbury-statutory-consultation.pdf>
- Link to Suffolk County Council's response to the Norwich to Tilbury targeted consultation: <https://www.suffolk.gov.uk/asset-library/scc-n2t-targeted-con-2025-response-with-appendix.pdf>
- Link to the PINS webpage where all public documents relating to Norwich to Tilbury can be found: <https://national-infrastructure-consenting.planninginspectorate.gov.uk/projects/EN020027>

Sea Link

Location: East Suffolk

Sea Link is a proposal for a subsea, grid reinforcement link between Suffolk and Kent. Currently there is a proposed converter station near Saxmundham, connected by underground cables from a landing point between Aldeburgh and Thorpeness. If the

substation at Friston is not built under its existing consent as part of ScottishPower Renewables' East Anglia ONE North/TWO project, the substation will form part of the Sea Link proposals.

Update (March 2025):

Suffolk County Council officers are continuing to engage with the Applicant on the details of the proposed Sea Link scheme prior to the submission of the DCO, which is expected imminently.

SCC responded to a pre-submission engagement in January 2025, raising and reiterating the Council's concerns regarding the proposed River Fromus Crossing and its impacts on heritage assets, the unsuitability of Benhall Railway Bridge as an access route to the converter station site, and the proposed core working hours for construction of the scheme.

The Council believes a coordinated and integrated access solution between the major infrastructure projects affecting Suffolk, including Sizewell C and National Grid schemes, is essential in reducing the cumulative impacts of multiple projects being under construction at the same time.

More information:

- Link to Sea Link's National Grid website page: <https://www.nationalgrid.com/the-great-grid-upgrade/sea-link>
- Link to Suffolk County Council's Sea Link webpage: <https://www.suffolk.gov.uk/planning-waste-and-environment/major-infrastructure-projects-including-nsips/nationally-significant-infrastructure-projects-nsips/sea-link>
- Link to Suffolk County Council's response to the Sea Link non-statutory consultation: <https://www.suffolk.gov.uk/asset-library/sea-link-scc-response-non-statutory-consultation.pdf>
- Link to Suffolk County Council's response to the Sea Link statutory consultation: <https://www.suffolk.gov.uk/asset-library/scc-sea-link-statutory-consultation-response.pdf>
- Link to Suffolk County Council's response to the Sea Link targeted consultation : <https://www.suffolk.gov.uk/asset-library/Sea-Link-Targeted-Consultation-Response.pdf>
- Link to Suffolk County Council's response to the Sea Link Grid pre-submission engagement: <https://www.suffolk.gov.uk/asset-library/sea-link-pre-submission-engagement-response.pdf>

- Link to the PINS webpage where all public documents relating to Sea Link can be found: <https://national-infrastructure-consenting.planninginspectorate.gov.uk/projects/EN020026>

Sizewell C

Location: East Suffolk

Sizewell C is a 3.2-gigawatt EPR nuclear power station.

Sizewell C announced formal commencement on 15 January 2024.

Update (March 2025):

While the Final Investment Decision is expected in Spring 2025, significant commencement works are already being undertaken. Discharge of Requirements have mainly thus far been archaeological schemes; however, detailed designs of the associated development highways improvements are now starting to be submitted (e.g. Yoxford roundabout). It is anticipated that construction of the key road mitigation schemes, including Two Village Bypass and Sizewell Link Road, will start in spring 2025. On-site works on these sites to date have been primarily archaeological survey works.

The Sizewell C Community Fund, which will provide up to £23m over the next decade for local charities, community groups and social enterprises who are delivering projects that benefit local communities in East Suffolk, managed by Suffolk Community Foundation, is now active and has several grant windows available, the next closing on 20 April 2025.

More information:

- Link to the Sizewell C website: <https://www.sizewellc.com>
- Link to Suffolk County Council's webpage on Sizewell C: <https://www.suffolk.gov.uk/planning-waste-and-environment/major-infrastructure-projects-including-nsips/nationally-significant-infrastructure-projects-nsips/sizewell-c-nuclear-power-plant>
- Link to the PINS webpage where all public documents relating to Sizewell C can be found: <https://national-infrastructure-consenting.planninginspectorate.gov.uk/projects/EN010012>

Sunnica

Location: West Suffolk

Sunnica is a proposed 1,130 hectares (2,792 acres) Solar Farm development across Suffolk and Cambridgeshire.

(No update this issue)

Update from Issue 4 (October 2024):

On 12 July 2024 the Rt Hon Ed Miliband MP, the Secretary of State for Energy Security and Net Zero, granted development consent for Sunnica Energy Farm against the recommendation of the Examining Authority which handled the case. Suffolk County Council, alongside Cambridgeshire County Council, East Cambridgeshire District Council and West Suffolk Council, had opposed this large solar farm project straddling West Suffolk and East Cambridgeshire, due to its scale and the degree of impact on the landscape and on communities.

SCC is seeking further clarity from the Applicant on the project's programme following the conclusion of claims for judicial review.

More information:

- Link to Sunnica's website: <https://sunnica.co.uk>
- Link to Suffolk County Council's webpage on Sunnica: <https://www.suffolk.gov.uk/planning-waste-and-environment/major-infrastructure-projects-including-nsips/nationally-significant-infrastructure-projects-nsips/sunnica-energy-farm>
- Link to the PINS webpage where all public documents relating to Sunnica can be found: <https://national-infrastructure-consenting.planninginspectorate.gov.uk/projects/EN010106>

White Elm Solar Farm

Location: Mid Suffolk

White Elm Solar Farm is a proposed 675-acre solar farm, including battery storage, with a design capacity exceeding 50MW and located within the three parishes of Mendlesham, Wickham Skeith and Thwaite, approximately 7.5km north of Stowmarket.

Update (March 2025):

At the end of November, Suffolk County Council submitted detailed comments to the Planning Inspectorate regarding the Environmental Impact Assessment Scoping, considering technical matters of assessment and not the principle of the development itself. These comments were used to inform the Planning Inspectorate's Scoping Opinion, which was published in December 2024 and can be found here - <https://nsip-documents.planninginspectorate.gov.uk/published-documents/EN0110003-000006-EN0110003%20-%20Scoping%20Opinion.pdf>

It is expected that public consultation on this project will take place soon.

The Suffolk Association of Local Councils (SALC), in collaboration with Council officers, provided advice to support the Parish Councils who had been asked by the Planning Inspectorate to make comments on EIA Scoping.

More information:

- Link to White Elm Solar Farm's Website: <https://www.whiteelmsolarfarm.com>
- Link to Suffolk County Council's webpage on White Elm: <https://www.suffolk.gov.uk/planning-waste-and-environment/major-infrastructure-projects-including-nsips/nationally-significant-infrastructure-projects-nsips/white-elm-solar-farm>
- Link to the PINS webpage where all public documents relating to White Elm Solar Farm can be found: <https://national-infrastructure-consenting.planninginspectorate.gov.uk/projects/EN0110003>

Other NSIPs

The following NSIPs in Suffolk have currently no significant updates to report:

- SPR - East Anglia ONE and THREE: Both are consented. East Anglia ONE (EA1) is complete; East Anglia THREE (EA3) is under construction. The EA3 converter station is currently being constructed at Bramford and works along the cable ducting route are being undertaken.
- Gull Wing Bridge: Thousands of Lowestoft residents made history on 7 September 2024 as they walked, wheeled and drove for the first time across the town's new, world-leading and unique Gull Wing bridge. The civic opening ceremony took place on Tuesday 19 November 2024.
- Drax (formerly Progress Power) at Eye Airfield: Consented. Construction is ongoing.

In addition, there is the possibility in the medium term of additional NSIPs, in relation to hydrogen infrastructure, water reservoirs, data centres, energy generation and potentially, in the longer term, further National Grid infrastructure. Future newsletters will update on further developments.

Suffolk Association of Local Councils and Suffolk County Council